

STANTONBURY PARISH NEWS

**Stantonbury
Neighbourhood Plan
results**

page. 6

**Read news
about Bradville
allotment**

page 8

**Entry form
for the Harvest
& Craft show**

page. 9



**FREE to residents of
Stantonbury Parish**

126 Kingsfold, Bradville
Milton Keynes
MK13 7DX

w: stantonbury-pc.org.uk
e: info@stantonburyparishcouncil.org.uk
t: 01908 227 201

CHAIRMAN'S REMARKS

Welcome to the Summer edition of the Parish newsletter.

This is the start of a new Parish Council year and we have a heavy work load. There have been a few changes of roles within the Parish Council but overall there are no significant changes in what I consider to be a very committed team. The Annual Report of the activities of the Council for last year has been posted on the Parish website.

We have also published a draft three-year plan for our work that addresses the current issues affecting us and looks to the potential issues that may impact us socially and financially.

I would like to congratulate and thank all the residents that responded to the neighbourhood plan survey. We received over 900 returned survey responses and lots of useful comments and suggestions. More information is provided on Pages 6 and 7.

We are in the process of coming to an agreement with Great Linford about sharing their Parish Warden in the summer and his role would be to engage with the community, pay attention to the detail around the Parish and to provide low order maintenance. Of course, his remit is much wider than just that and we will provide a fuller profile and his job scope in the next issue of the newsletter. Coincidentally with this we hope to appoint a Deputy Clerk to cater for the increased work.

At the "Meet the Councillors meeting" in May, the YourMK regeneration survey was drawn to the attention of the Parish Council. Concern was expressed by home owners that they had not been consulted. This is an important point. We wrote to YourMK and our letter and their response is again on our website. Before we respond to their reply letter it's important that we have the views of home owners. Please read the letters

on our website and write to us with your comments which we will pass on to YourMK.

With regard to Planning Applications we have been trialling a system of only looking at specific proposals that have been raised for our attention where members of the community, or the local Parish Councillors have concerns. This has been quite successful and we will continue to follow this process. If you have a concern re any proposed development please contact the Parish Council.

I hope that you all enjoy the coach trips organised for this year and look forward to seeing as many of you as possible at our MK 50 Event on August 19th.

On behalf of the Council I hope you have a pleasant summer.

Graham Davison

DEVOLVED SERVICES

Since last August the Parish Council has been in consultation with MK Council regarding devolved services.

In our initial conversations with MKC it was suggested, that since we were ahead of other Parishes in devolved services the potential for some form of preferential treatment may apply i.e. some form of financial support during the transition phase. We also provided a list of criteria and matters of clarification that MKC needed to meet before we would commit to taking on the service.

As time has passed MKC have realised that devolving any of the services requires a detailed examination of their existing contracts and how this will impact on each of the Parishes. The process is extremely complex and MKC have many contractual constraints to contend with.

As it stands MKC are preparing a "framework" to fit Parish Councils to Serco and MKC. In effect, this means we will pay for MKC to manage our interests with Serco. We will be committed to MKC's contract with

Serco until 2022.

This is not our understanding of the meaning of devolution.

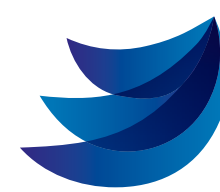
Currently we are waiting for further information regarding the "framework" and responses to the questions we have previously raised.

We will not commit the Parish Council to take on any service unless we are sure it is in the best interests of the Parishioners.

We always welcome articles and community notices for inclusion in this newsletter, and items of local interest, old photographs, etc.

For submission deadlines please contact the Parish Office on **01908 227 201**
Or email: info@stantonburyparishcouncil.org.uk

Handwritten items can be accepted and photographs could be scanned by the Parish Office. Stantonbury Parish Council reserves the right to edit, defer or refuse articles and advertising submitted for publication.



FREE EVENT AT BANCROFT PARK CELEBRATE MK50

SATURDAY 19 AUGUST 2017
12:00PM - 9:00PM

- **Artisan Street Food**
- **Craft Stalls**
- **FREE Children's Entertainment**
- **FREE Fairground Rides**
- **FREE 9 hours of Live Music**
- **FREE Human Foosball Competition**

Extra Parking at MK Museum (until 10:15pm)

During the day
collections will
be made for
Willen Hospice.



More info:
www.stantonbury-pc.org.uk
Funded and organised by
Stantonbury Parish Council

Stantonbury Parish Council
126 Kingsfold, Bradville
Milton Keynes, MK13 7DX

01908 227201
info@stantonburyparishcouncil.org.uk





**STANTONBURY
PARISH
COUNCIL**

STANTONBURY PARISH COUNCIL funded and organised.

Play dates in the park

FREE EVENT

We have booked MKPA with their amazing bouncy slide from 2pm to 4.30pm

**Thursday 10th
August 2017**

at Cawarden Play Park,
Stantonbury

**Thursday 17th
August 2017**

at Winchcombe Meadows Play Park,
Oakridge Park

**Thursday 24th
August 2017**

at Barry Avenue Play Park,
Bradville

Plus "The Great Gappo" will be introducing circus skills to the children from 2pm to 4pm on all of above dates.



**STANTONBURY
PARISH
COUNCIL**

Summer 2017 CHILDRENS' EVENT

Funded and organised by Stantonbury Parish Council

Football in the park

FREE EVENT

Cawarden Park, Stantonbury

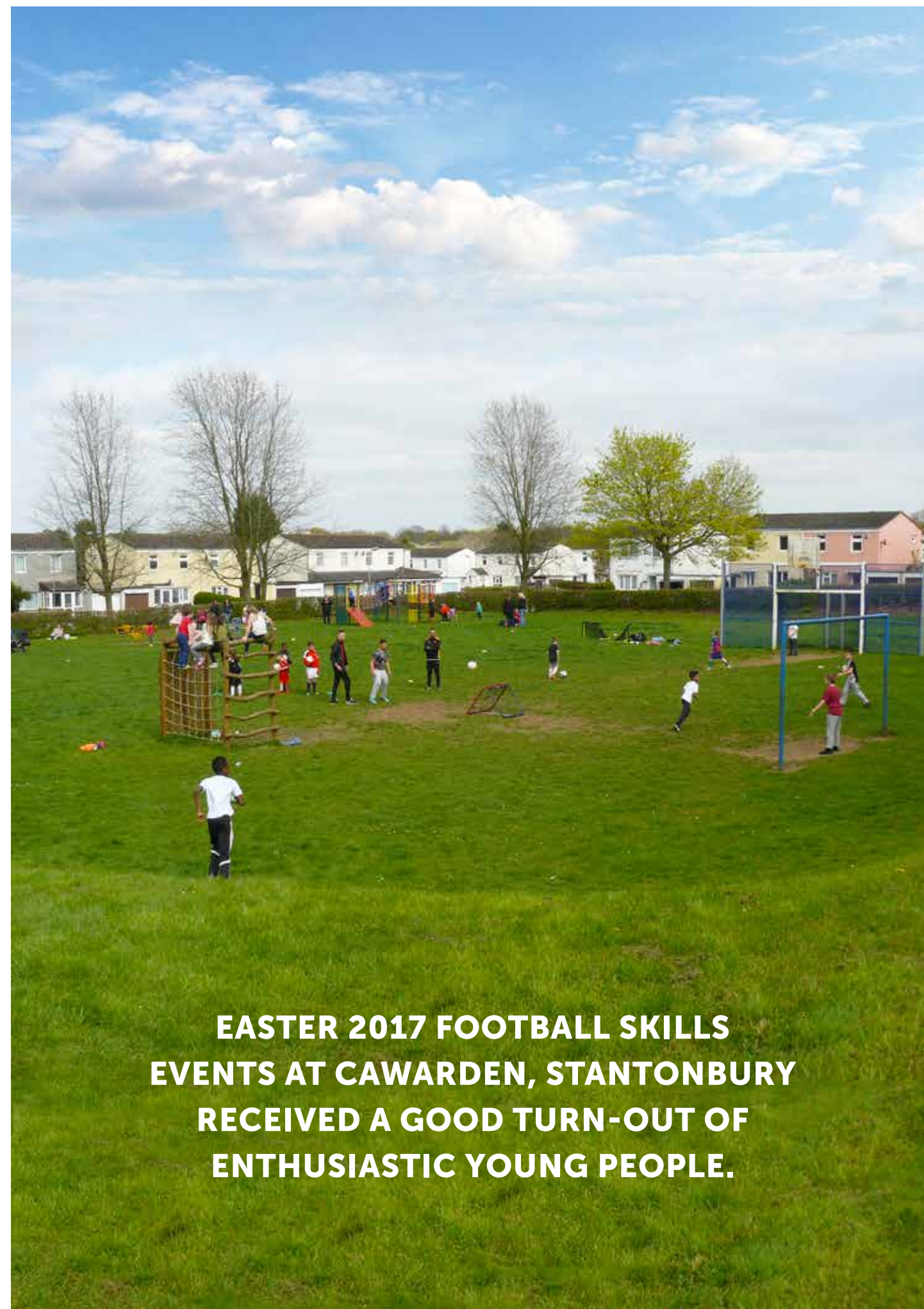
(with 2 football coaches) on the following dates:

Tuesday 1st August 2017 from 1.00.to 3.30.pm

Tuesday 8th August 2017 from 1.00 to 3.30.pm

Tuesday 15th August 2017 from 1.00 to 3.30.pm

Tuesday 22nd August 2017 from 1.00 to 3.30.pm



**EASTER 2017 FOOTBALL SKILLS
EVENTS AT CAWARDEN, STANTONBURY
RECEIVED A GOOD TURN-OUT OF
ENTHUSIASTIC YOUNG PEOPLE.**

STANTONBURY NEIGHBOURHOOD PLAN

Many thanks to all those who took part in our survey – we had a positive response with a total of 933 returns, ranging from people aged 18 to over 85!

Congratulations to our lucky winners of the prize draw who each receive £50 of “Love to Shop” vouchers:

Mr. Nash from Bancroft,
Mr Seeney also from Bancroft,

Mrs Clay from Stantonbury
Mrs Ginn also from Stantonbury.

SURVEY RESULTS

The overwhelming view from residents is that whilst you like the area you live in, there are clear areas needing improvement. You also feel there is, in general, a good balance of housing and would like to protect against any overwhelming development, whilst maintaining and looking at opportunities to improve community facilities.

The Neighbourhood Plan can help to do this and we are now reviewing in detail all of the “Issues and Options” coming out of the survey whilst progressing to the Draft Plan stage.

KEY THEMES AND ISSUES

Parks, Open Spaces, Heritage & Access to Nature

- Enough open space
- Need to maintain
- Some play areas could be better
- Support for review of play facilities

Comments:

Outdoor fitness equipment
Skate Park
More for older children
Nature trail

Getting Around

- Lots of potholes
- Parking an issue
- Roads generally safe
- Some rat-runs speeding concerns

- Turning onto grid roads a problem
- Some concerns re public transport

Comments:

Unsafe redways – lighting, overgrown, surface
Junctions with grid roads a problem
Bus route to CMK and hospital worst
Support parking restrictions

Health Services

- Enough Doctors
- Enough Dentists
- Wider opportunities for health provision welcomed

Comments:

Cannot get appointments
Waiting times too long

Housing

- Good mix of housing
- Some opportunities for small scale development
- Need more low cost housing

Comments:

Maintain density
Develop derelict garages
More bungalows



Cleanliness of the Area

- Litter and fly-tipping a problem
- Strong support for recycling

Comments:

Need more bins
Concern re proposed charge for green bins
Very bad at the derelict garages

Community Facilities

Support for the following:

- Coffee shop
- Older people's social club
- Community centre on Stantonbury
- Youth club
- Childcare facility
- Post box on Oakridge Park

Comments:

Need decent shops eg butcher, bakers, hairdresser, takeaway
Need a library
Make better use of existing community centres
Scouts

Crime and Community Safety

- Concern re burglary
- Concern re Anti-Social Behaviour
- Concern re vehicle crime
- Some concern re violent crime

Comments:

Need more visible police
Stantonbury shops very run down, feels unsafe
Groups of youths loitering, feels intimidating

WHAT HAPPENS NEXT?

Workshops have been held to review the Issues and Options raised from the consultation with residents. Further events were held, targeted at businesses, community groups and education providers to ensure as wide an audience as possible had the opportunity to feed into the process.

The Neighbourhood Plan Committee and Steering Group will now work towards drafting policies for the Plan which will be shared with residents over the coming months.

Look out for our stand at the MK50 Event on Saturday 19th August 2017 in Bancroft Park.

For further information about the Neighbourhood Plan contact Lisa Emmanuel, Project Officer on np@stantonburyparishcouncil.org.uk Tel. 07946317505 or call in at the Parish Office 126, Kingsfold, Bradville



ALLOTMENT NEWS

Disabled Allotment Plot Available

Is there anyone within Stantonbury Parish that is registered disabled who would like to take over an allotment plot on Bradville Allotment site?

The designated disabled plot has:-

- Paved paths with raised beds
- Established plants such as raspberries, strawberries and blackberries
- A greenhouse
- Room for a shed to be added
- Water tap with a hose very near by
- Parking space by the side of it.
- We also have a toilet on site with disabled access.

There is a possibility that two persons could share this plot, if it was too much for one person. Or a family member or friend to assist would be acceptable. We are a very friendly allotment group and would welcome a new plot holder.

If you are interested please contact the Parish Council on 01908 227201.

National Allotment Week

Come along to the Bradville Allotment site to celebrate National Allotment Week. We have an open day being held on Sunday 20th August, opening from 2 - 4pm.

You will be able to wander around and maybe pick up some tips, put your name down for a plot, or just have a cup of tea and a delicious home made cake. There is a raffle which will be drawn about 3.30pm and some produce for sale. Admission is free.



Harvest and Craft Show

This show is open to all Parish Residents and their families - so come along and take part. If you grow your own vegetables and flowers, bake cakes, make jams, pickles, home brewed wine, sew, knit, paint, draw, or take photographs, please come along and enter our show.

For children there is a fancy dress competition, make an animal out of vegetables and a painting/drawing competition. There will be a raffle, refreshments and cakes, and an auction of produce and items.

All exhibits to be in the hall from 10.00 to 11.30am. Doors open for general public from 2.00 - 4.00pm. You do not have to enter to attend, just come along and have a look. Admission free.



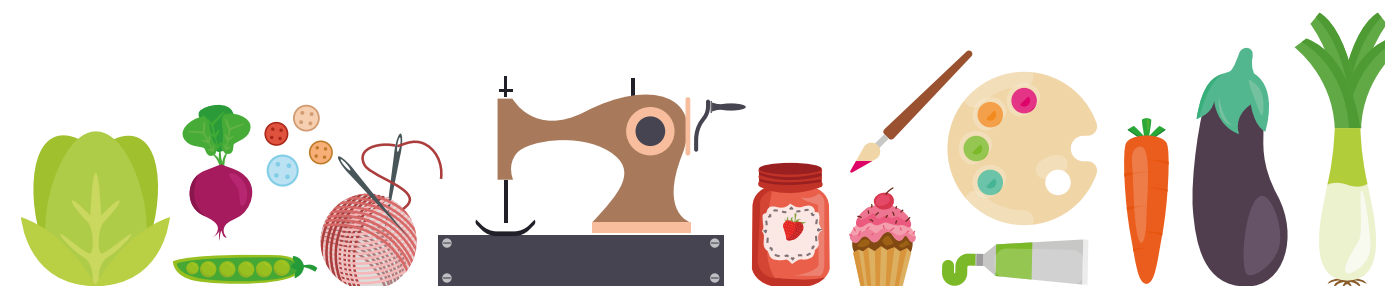
HARVEST & CRAFT SHOW

SATURDAY 9TH SEPTEMBER 2017

Organised by the Bradville Allotment Tenants and held at:

BRADVILLE HALL COMMUNITY CENTRE, MERCERS DRIVE, BRADVILLE

This show is open to all Stantonbury Parish Residents. Have you grown, made, crafted or baked something you can exhibit, please come along and show it off.



ENTRY FORM

PLEASE COMPLETE CLASSES ENTERED ON REVERSE FIRST

NAME..... TOTAL NO OF CLASSES ENTERED.....

ADDRESS..... TOTAL REMITTANCE ENCLOSED.....
(30p PER CLASS)

TELEPHONE NO:.....

All entries/exhibits can only be accepted in the Hall on the day between 10.00am - 11.30am

Hall Doors open from 2.00pm - 4.00pm for general public

PLEASE NOTE!!!

IF YOU WANT YOUR ENTRY ITEMS TO BE RETURNED TO YOU AND NOT AUCTIONED

☐ PLEASE TICK HERE AND ARRANGE TO COLLECT THEM BEFORE 3 PM.

ANY QUERIES PLEASE CONTACT JANE KIRKHAM
TEL: 07753 631893 OR EMAIL: janekirkham0@gmail.com

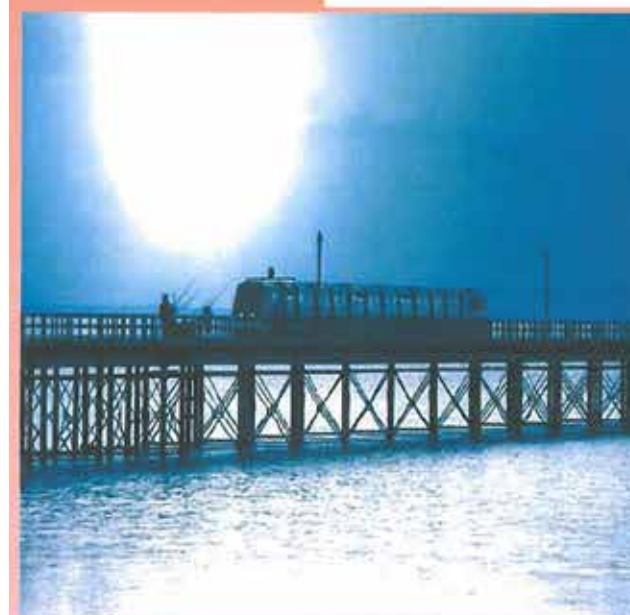
CHEQUES MADE PAYABLE TO: BRADVILLE ALLOTMENT TENANTS



		Class Entered Tick Box	Enter 30p per Class			Class Entered Tick Box	Enter 30p per Class
SECTION A	VEGETABLES	(Grown under ground)		SECTION F	CARD MAKING		
1	4 Garlic			1	Best Any 'Golden Moments' Card		
2	6 Shallots			SECTION G	DRAWING AND PAINTING		
3	4 White Potatoes of equal size			1	Best Adult Drawing/Painting Subject: Golden Moments		
4	4 Red Potatoes of equal size			SECTION H	HANDICRAFT ITEMS		
5	4 Onions			1	Best knitted item		
6	4 Carrots with 2" Tops			2	Best crocheted item		
				3	Best x stitch/tapestry		
SECTION B	VEGETABLES	(Grown above ground)		SECTION I	NOVELTY CLASSES		
1	6 Runner Beans			1	Funniest Vegetable		
2	6 French Beans			2	Longest Runner Bean		
3	3 Sweetcorn			3	Largest Onion		
4	3 Courgettes			4	Largest Marrow		
5	1 Marrow			5	Largest Pumpkin		
6	1 Squash						
7	1 Cabbage						
8	1 Cauliflower						
9	1 Broccoli			SECTION J	HOMEMADE JAMS AND PICKLES		
SECTION C	SALAD			1	1 Jar Any Fruit Jam		
1	3 Beetroot with 2" Tops			2	1 Jar Any Pickle or Chutney		
2	6 Radish			SECTION K	PHOTOGRAPHY		
3	1 Lettuce			1	Best Photograph Subject: 'Golden Moments'		
4	4 Tomatoes Red						
5	4 Tomatoes Cherry			SECTION L	CHILDRENS SECTION (Under 12 yrs)		
6	6 Spring Onions			1	Animal made from Vegetables		
7	1 Cucumber			2	Best Children's Drawing/Painting Subject: Golden Moments		
8	1 Pepper			3	Fancy Dress Golden Moments' theme		
9	3 Chillies						
SECTION D	FRUIT			SECTION M	FLOWERS		
1	3 Apples			1	Arrangement of 3 Stems Any home grown flower.		
2	3 Plums			2	Any home grown Potted Plant		
3	3 Pears						
4	5 other Soft Fruit			SECTION N	HOMEMADE WINES, BEVERAGES		
SECTION E	HOME BAKING			1	1 bottle of homemade alcoholic drink		
1	1 Large Fruit Cake			2	1 bottle of homemade non alcoholic drink		
2	1 Large Sponge Cake						
3	1 Fruit Pie						
					GRAND TOTAL		
					PLEASE COMPLETE DETAILS ON REVERSE		

Family Day Trip to Southend-On-Sea

Wednesday 9th August
2017



This year we will be departing from the Parish Office (please arrive by 8.15am as we will be departing @ 8.30am). Leaving Southend-On-Sea @ 16.30pm to arrive back around 7.00pm



£5-00 per person

Booking Forms from:
Stantonbury Parish Council
Office, 126 Kingsfold,
Bradville, MK13 7DX

Tickets will be on sale from Tuesday
4th July 2017 at 10.00am

No refunds after Tuesday 1st Aug 17

No reserving of seats (First come / first served basis)

Ticket number is not seat allocation number



Below is an example kindly circulated by the Thames Valley Police via MK Resilience Group to their subscribers.

The Joint Civil Aid Corps (JCAC) enables members of the public to be involved in actively supporting and developing their communities. JCAC is a new emergency support organisation now looking to build an active body of volunteers willing to meet the needs of our communities and to provide support to our professional emergency services. It is currently just in Milton Keynes but plan to expand outwards as development allows.

There are four elements to the Corps:

- The JCAC is the management organisation.
- Civil Aid Volunteer Corps (our operational arm).
- Community Resilience Volunteers (community-based support arm).
- The Civil Cadet Corps (youth arm).

JCAC is looking for adult volunteers to help with its continuing development, from administrators to trainers, from professional trade specialists to people wanting to train in search and rescue, security and first aid. To find out more information: email: enquiries@jcac.org.uk or visit the JCAC website www.jointcivilaidcorps.org.uk

David Tavener – For and on behalf of JCAC

OAKRIDGE PARK MEDICAL CENTRE

In the 4 months shown below we have seen 845 missed appointments which is appalling especially when the practise is very busy and people are waiting for an appointment. Then there is the cost of having to pay staff who then have to wait in case the patient turns up. The figures for each month are as follows:-

JANUARY 180
FEBRUARY 220
MARCH 222
APRIL 223

Looking at it logically if you had booked someone to come to your house to fix something and they didn't turn up and whatever was wrong didn't get fixed I think you would be very upset/annoyed. So please if you are not able to make an appointment please call the surgery and let them know. Currently the practise has 2 partners, 3 salaried GPs' (as from September) and 3 long term locums supported by 3 nurses, 2 health care assistants and 2 phlebotomists.

BRADWELL ABBEY MEDIEVAL & FAMILY FUN DAY

Sunday 10th September 11.00 – 4.00 FREE ADMISSION

There's lots to see with

- Authentic Re-enactors
- Arts and Craft activities
- A Medieval Marketplace
- Birds of Prey display and Archery.
- Children's Amusements on the green
- Bouncy Castle, Slide, Bungee trampoline & more.
- Lots of Craft & Gift stalls as well as Refreshments



Contact us via

email: action-4@outlook.com

tel: 01908 316 938

**Bancroft, Bancroft Park, Blue Bridge,
Bradville, Oakridge Park & Stantonbury**

Thank you to all of you who have contacted us in response to our last newsletter.

We are pleased to report that some of your concerns have now been dealt with. Some are still in progress such as the placing of a Dog Poo Bin in Bradvue Crescent, Bradville.

Dog Fouling is still a major concern for residents of Oakridge Park. However we will continue to try to educate and encourage people to "Pick Up the Poo"

Members of our team were joined by TVP & Parks Trust to show folks what we are all about.

Please contact us and let us know what help your community needs.



MATHIESEN CENTRE TRUST



4 Mathiesen Road
Bradville
Milton Keynes
MK13 7AG

[@mathiesentrust.org](https://www.facebook.com/mathiesentrust.org)
01908 315647

[Mathiesen Centre](https://www.mathiesen.org.uk)

[@MathiesenCentre](https://www.mathiesen.org.uk)

Mathiesen Centre – available for hire!

- Sports Hall
- Meeting Rooms (with projection facilities)
- Art Room (with both wet and dry areas)
- Games Room
- Coffee Bar/Kitchen
- Free Wifi

With prices starting from as little as £7.50 per hour, the Mathiesen Centre is the perfect place for exercise classes, art classes, sports clubs, business meetings or social events.

A discretionary community or charity discount of up to 30% can also be offered, please enquire for more details.



CHAT | RELAX | ADVICE

The Mix is a drop in service in Milton Keynes that provides a place for meeting and sharing information about mental health services.

About Us

The Mix is a place for people who are living and working in Milton Keynes to meet in a safe and inclusive setting, and share information about local mental health services. We are a community group and rely on charitable donations and grants to keep our sessions running.

Our informal and accessible 'drop-in' sessions promote self help, as well as allow people to socialise and make new friends in a relaxed and welcoming environment. We also offer a range of different activities including drama, arts and crafts and games. If you just fancy a chat and a coffee instead then that's ok - we serve cakes, hot and cold drinks and other refreshments during the session.

The Mix is supported by a number of local groups, charities and other agencies, who regularly attend sessions and have members of staff on hand to offer help, support and advice.

We currently receive support from -

- Rethink
- Citizens Advice Milton Keynes
- Milton Keynes Council
- CNWL NHS Foundation Trust
- Healthwatch Milton Keynes
- Neighbourhood Employment Programme

No appointment is necessary.

Drop in and speak to one of our volunteers who will introduce you to someone that might be able to help you.

Citizens Advice Milton Keynes

If you would like to use the Citizens Advice service, no appointment is necessary and all advice given is free, confidential and impartial. The adviser you meet with will need to take some personal details from you such as contact number, address and date of birth.

To help the adviser resolve your enquiry more quickly, it's always a good idea to bring any paperwork with you to the session that relates to your enquiry, for example - if you are having problems with your landlord or the property you rent, bring your tenancy agreement and rent statement with you.

Getting in touch

You can contact our organising committee using the following details -

Write to us

The Mix MK
C/O Citizens Advice Milton Keynes
361 Midsummer Boulevard
MK9 3HP

Email

themixmk@mkcab.org.uk

Phone

01908 545 190
(This phone is not manned everyday - please leave a message and we will return your call as soon as possible)

Opening Hours

The Mix is open on Mondays afternoons
1.30pm - 3.30pm

themixmk.com

At home with a small baby or child?



Why not come along to our

Under Fives Group

at

Christ Church Stantonbury

Stantonbury campus

Thursdays 9.30 -
11.30

All Welcome



There's lots of play, fun and something to make for the children.
Tea, toast and talk for the adults

And a time to hear stories and sing for everyone.....

£1 a child

More information ring Chenda 07947 328551



EMERGENCY PLAN

In line with many other institutions the Parish Council has for some time been formulating an Emergency Plan for the Parish. This is broadly based on the MKC format. It is, as you will understand, extremely difficult to make provision for disastrous events that may happen in the future because they do not happen at prescribed times!

With many of the emergency services responding from outside our area they do not necessarily have knowledge of certain things such as vulnerable people or warden assisted accommodation and others that might need special

treatment. So as in the past we would hope that immediate neighbours would know the situation and act accordingly.

With industry and the larger use of hazardous materials exclusion zones have become wider and of course along with this there are the actions of misguided people. We hope that we would never have to implement this plan but what we are asking as a council is that any tradespeople such as licensed chain saw operators would voluntarily be included in the plan in case of emergency by giving permission for use of their mobile phone number. Also because of the wide exclusion zones that may

exist in times of emergency people may be moved around the Parish so that any centres that can make their premises available would be welcome to be recorded in the plan e.g. licensed premises, church halls etc. Any information given i.e. contact numbers will only be known to the councillors and not available to a wider audience.

Richard Wilde



THE FUTURE OF PLAY AREAS IN STANTONBURY PARISH

The present funding situation with Milton Keynes Council means that many of the play areas in the Parish, when they come to the end of their usable life, will not be repaired nor items replaced.

This leaves us with a dilemma and although we have warned parishioners about this situation, very little sensible comment has been made to us. What does not seem to be understood is that decommissioning a play area can be more expensive than repairing it. This is usually associated with

the high cost and specialised disposal of the 'soft land' material. The Parish Council considers play areas to be of great importance for our children's welfare, not only for their health, through exercise but for socialisation and interaction.

In light of this, on your behalf the Parish Council have negotiated some urgent repairs and will seek further grant assistance as well as their own funds to prolong the life of these valuable resources. Although you may not see immediate action be assured that

the grant funding and negotiations are taking place in the background.

In the meantime if you have any viable suggestions of equipment that you may have seen used successfully that we might use in the future, subject to funding, please feel free to contact us at the Parish Office.

Richard Wilde



RECYCLED CRAFTS COMPETITION

Congratulations and a £10 Gift Card have gone to Lois, Michael and Libbie for winning the Recycled Crafts Competition in the Spring 2017 Edition of our Newsletter. Well Done!



DAY TRIP TO THE BLACK COUNTRY LIVING MUSEUM AT DUDLEY

The seniors in our Parish enjoyed a thoroughly wonderful hot day at the Black Country Living Museum in Dudley on 24th May.

The Black Country Living Museum is an open-air museum of rebuilt historic buildings that have all been re-sited from the surrounding area of the Black Country. It tells the story of the world's first industrial landscape with buildings, vehicles (such as electric trams and trolley buses that transport visitors around the site. In addition many of the seniors took the Canal Trip on a narrowboat through the limestone caverns. We had an added bonus of viewing some of the actors who were filming the next series of "Peaky Blinders" down by the Boat Yard at the time of our visit.



Wood End First School
 Endridge, Stantonbury, Milton Keynes, MK14 6BB | Tel: 01908 316424
 E-Mail: office@woodendsch.org.uk | www.woodend.org.uk

Ofsted 2017: "You, the staff and the Governing Body are ambitious for all pupils. Pupils' personal development comes first in this school that many describe as a family community."



Do you have a child starting school in September 2018?

Either join us for a general open morning on
Thursday 12th October, 9.15am or 10.30am

or phone to organise a personal tour by the Headteacher.
 school office: **01908 316424**

We still have a few spaces in our Foundation class in September 2017.
 Contact us for further information.



MK STRAY DOG SUPPORT GROUP



MK STRAY DOGS 3RD FAMILY FUN DAY AND DOG SHOW

**24 September at
12:00–16:00
Booking in from 11.30**

Bradville Hall Community Centre,
Mercers Dr, Bradville MK13 7AY

A great family fun day for 2 and 4
legged family members. Including
fun dog show. Have a go at agility,
dog demonstrations and an
eclectic mix of stalls.



1st Bancroft Brownies

are looking for new girls aged 7 to 10

If you want to make new friends, earn badges, play games,
do crafts, go on outings and more...

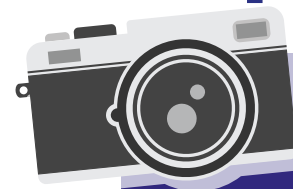
Join us on Mondays from 6:00 to 7:30pm (term time) at:
Bancroft Meeting Place, 29 Hadrians Drive, MK13 0QB



For more information, please contact:
1stbancroftbrownies@gmail.com

Autumn Term
starts
11th September

PHOTO COMPETITION



COME ON ALL YOU BUDDING YOUNG PHOTOGRAPHERS

5 years to 12 years & 13 years to 18 years

We need you to take a photo somewhere around the
area where you live in Stantonbury Parish and email the photo to
info@stantonburyparishcouncil.org.uk

We may use your photo for the front cover of the Newsletter

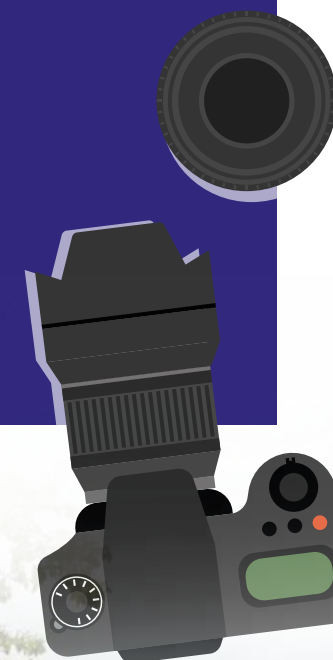
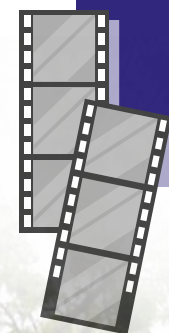
**The winning entries will receive a
£30 gift voucher each**

Please provide your name, address and age

Final date for entries: Monday 4th September 2017

Please note:

Your photograph will not be returned.
Also you must live in Stantonbury Parish.





Human Foosball

Competition

**Stantonbury Parish Councils' Free Event
Saturday 19th August at Bancroft Park**

**To enter the competition, you will need a team of 7 players
(players must be over 16)**

Full details will be sent once all entry forms have been received.



Team Name _____

Name of Team Captain _____

Phone number _____ **Email address** _____

6 Players Names _____

Please return the entry from to Stantonbury Parish Office by Friday 4th August 2017

Stantonbury Parish Council, 126 Kingsfold, Bradville, Milton Keynes MK13 7DX