

# STANTONBURY PARISH NEWS



## FORTHCOMING EVENTS

### Christmas Coach Trip to London

Wednesday 6th December 2023

### Over 65's Christmas Lunch

Wednesday 13th December 2023

**FREE to residents of  
Stantonbury Parish**

126 Kingsfold, Bradville  
Milton Keynes  
MK13 7DX

**t:** 01908 227 201

**e:** [info@stantonburyparishcouncil.org.uk](mailto:info@stantonburyparishcouncil.org.uk)

**w:** [stantonbury-pc.org.uk](http://stantonbury-pc.org.uk)





# Chair's Welcome

**Welcome to the Autumn/Winter Edition of our Parish Newsletter. I hope you find it informative and entertaining.**

During a gloriously hot day in July, we held a **tree planting and commemorative ceremony** at the Community Hub which was attended by the Deputy Mayor and one of Stantonbury's Ward Councillors as well as our Parish Councillors. The bench and tree were installed in memory of the late Queen Elizabeth II.

I'm pleased to say the changeable summer weather did not put a dampener on our summer of sports and play this year. Each session proved very popular with residents all over the parish. Our coach trip to Great Yarmouth proved very popular too with an extra coach (5 in total) being hired to accommodate the demand.

We are also pleased to announce the installation of **bleed control kits** both at the Parish Office and at the Community Hub. For more information on these please see page 4.

At the end of September we held a very successful Bingo Night. This was well attended, and we hope to make this a regular monthly feature at the Community Hub. Keep an eye out for future dates on social media and our noticeboards.

The refurbishment of the **play park** on Walsh's Manor in Stantonbury is now complete and the space is ready for our residents to enjoy. Jointly funded between Stantonbury Parish Council and Milton Keynes City Council, the park now includes some new equipment and surfacing.

We were planning another popular **skip amnesty** this autumn but unfortunately have had to postpone this until next year. We will let you know when this is due to take place.

I can confirm that SPC were successful in obtaining a grant to help provide Adult Learning classes with no cost to our residents. The start date for these classes is still being finalised but as soon as this is confirmed we will advertise this on social

media and our noticeboards.

SPC have been busily planning events to take place throughout the Christmas period and I'm pleased to announce along with a Christmas Coach trip to Central London on Wednesday 6th December, plans for the Over 65's Christmas Lunch on Wednesday 13th December are going well. We require volunteers to help at the lunch. For further details on these and other events, please see page 11.

Whatever you're doing this autumn/winter keep warm and well.



Cllr Linda Morgan  
Chair of Stantonbury Parish Council

## APPLY FOR A GRANT

**Clubs** ◆ **Associations** ◆  
**Schools** ◆ **Charities** ◆  
**Community Groups**

**Grants are available to support groups in the community, most commonly for £500. Applications for higher amounts (up to a maximum of £1,000) may be considered under special conditions.**

**Submissions are now open for grant applications from clubs, associations, schools, charities, and community groups based outside of the parish.**

**To receive an application pack, please contact Stantonbury Parish Council either by phone on 01908 227201 or by email at [info@stantonburyparishcouncil.org.uk](mailto:info@stantonburyparishcouncil.org.uk)**

**Stantonbury Parish Council**  
Stantonbury Parish Office,  
126 Kingstold Bradville, Milton Keynes, MK13 7DX  
01908 227201  
[www.stantonbury-pc.org.uk](http://www.stantonbury-pc.org.uk)  
[info@stantonburyparishcouncil.org.uk](mailto:info@stantonburyparishcouncil.org.uk)

 **STANTONBURY  
PARISH  
COUNCIL**

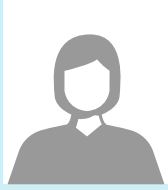


# Your Parish Councillors

## Oakridge Park



**John Warren**  
Co-opted Councillor  
Oakridge Park Ward



**Co-optee Vacancy**  
Councillor  
Oakridge Park Ward

## Stantonbury & Linford Wood



**Carol Northwood**  
Vice Chair  
Stantonbury & Linford Wood Ward



**Sandra Kennedy**  
Councillor  
Stantonbury & Linford Wood Ward



**Paul Baxter**  
Councillor  
Stantonbury & Linford Wood Ward



**Derek Northwood**  
Councillor  
Stantonbury & Linford Wood Ward

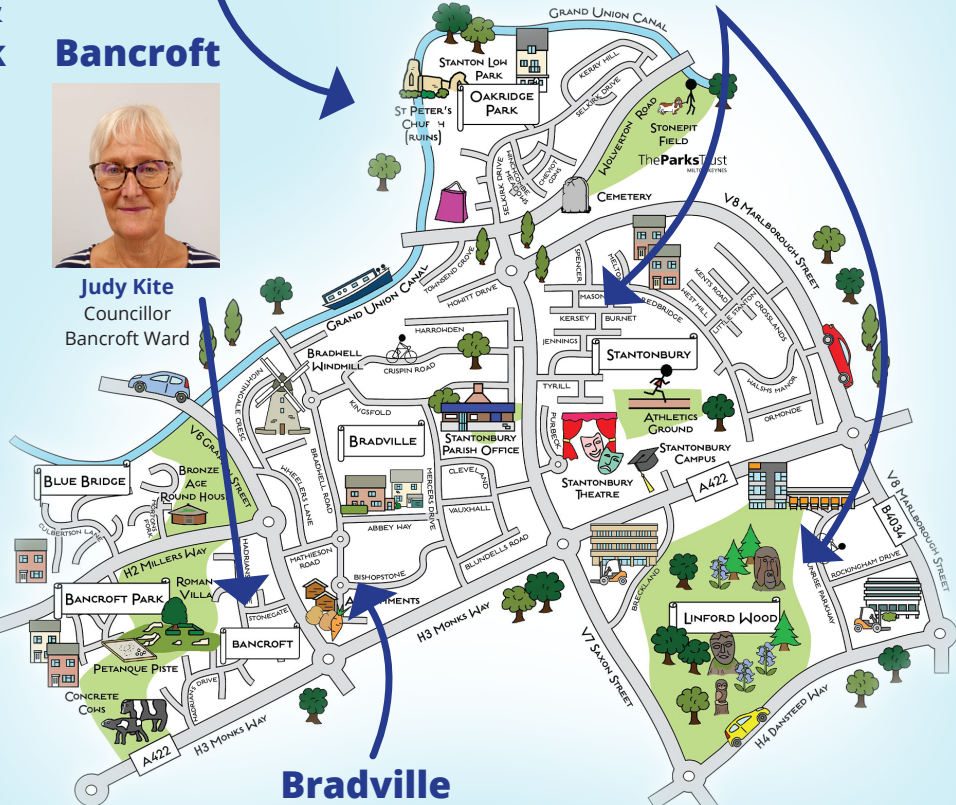
## Blue Bridge & Bancroft Park Bancroft



**Linda Morgan**  
Chair  
Blue Bridge & Bancroft Park Ward



**Judy Kite**  
Councillor  
Bancroft Ward



## Bradville



**Ann Ronaldson**  
Councillor  
Bradville Ward



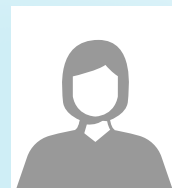
**Abid Anwar**  
Councillor  
Bradville Ward



**Peter Kirkham**  
Councillor  
Bradville Ward



**Kevin Smith**  
Councillor  
Bradville Ward



**Co-optee Vacancy**  
Councillor  
Bradville Ward

If you have any concerns you can contact the Councillor for your area by email, or alternatively contact the parish office and we'll forward your email onto the appropriate Councillor.

All email addresses are as follows:  
**allfirstnamesurname@stantonburyparishcouncil.org.uk**

# Become a Councillor

**We currently have vacancies for Councillors in Bradville and Oakridge Park**

By becoming a Parish Councillor you'll become someone your community looks to for help, guidance, and support. Parish Councillors are community leaders with the power to influence decisions for the benefit of the people they serve. Seeing your community change for the better, as a result of



decisions you have helped to make, is something that can give you a sense of achievement and pride.

If you would like to apply to become a Councillor in the above areas and represent your community, please contact the office on **01908 227201** or **info@stantonburyparishcouncil.org.uk** and we will advise you of what is involved and how to apply, or you can contact Milton Keynes Council directly.



# Bleed Control Kits

Following the installation of our defibrillators, it seemed a natural progression to look into installing Bleed Control Kits.

The Parish Council purchased two of these kits and they have now been installed, one outside the parish office and the other outside the Community Hub.

The kits are easy to access with step-by-step instructions on how to use them. To help locate our kits we have noted the what3words below:

The Parish Office is: **ADOPTERS.SPEAKS.MAGNETS**

The Community Hub is: **STABLE.BOMBSHELL.KICKS**

We hope that no-one is put in the position where they are ever needed to be used, but it's good to know they are there.

**IMPORTANT:** In the event of an emergency dial 999 or 112 and ask for an ambulance before you do anything else. The operator will confirm the location of the nearest bleed control kit and give you the number code to unlock the door of the bleed control kit's cabinet so you may access the kit itself.

**YOU DO NOT NEED TO BE TRAINED TO USE THIS KIT - REMEMBER TO DIAL 999 or 112 FIRST**



## STANTONBURY PARISH COUNCIL OFFICE

126, Kingsfold, Bradville, MK13 7DX

**What3Words: ADOPTERS.SPEAKS.MAGNETS**

Attached to the external wall to the right of the front door.



## THE COMMUNITY HUB

Mercers Drive, Bradville, MK13 7AY

**What3Words: STABLE.BOMBSHELL.KICKS**

Facing the front of the Hub, the cabinet is to the left hand side next to 2 fire exits.

# New Play Park on Walsh's Manor in Stantonbury

The newly refurbished play park was opened in August this year and was jointly funded by Milton Keynes City Council and SPC.

These photographs were kindly provided by our Parish Councillor for Stantonbury & Linford Wood Paul Baxter.





## LOCAL AUTHOR IN THE SPOTLIGHT:

# Linda Yearsley

**Linda wrote under the pen name of Susan St. James for her novels Katy Alwood, Jandina, and The Last Rose of Summer. Her latest book, Mister Kitt, was written under her own name, and was inspired by her beloved, late cat, Gizmo.**

Coming from London's East end, Linda spent a lot of time beneath her grandmother's roof in Upton Park. As Linda remembers, she and her siblings were "packed up a bit like sardines!" For five years, a two-up two-down house in Green Street was Linda's home, before the family were given the keys to a larger house down by the Albert Docks. "I was always scribbling on scraps of paper," Linda recalls. "I won a literature award for a story I'd written, but it was during the early eighties when I began to write seriously. By this time, I was living in Newmarket."

Linda was put in touch with interviewer, author, and playwright Tony Parker through a mutual friend. Mr Parker wrote several plays for radio, stage, and BBC television, and episodes for series such as Juliet Bravo, The Gentle Touch, Within These Walls, and Crown Court. Linda

passed her work to him and nervously waited for, what she assumed would be, critical feedback. To her surprise, he both praised and encouraged her writing.

Although Linda continued to write, the everyday pressures of raising a family meant she was obliged to put any serious pursuit of her passion on hold. As a result, a period of twenty years passed between the publication of Linda's last novel and Mister Kitt. Dedicated to her beloved cat, Gizmo, who she sadly lost during the pandemic, the novel centres around a hidden world of talking felines. As Linda explained, Gizmo, was the inspiration for the novel's characters: "his naughty antics I've brought ... into the character of Mister Kitt, although his benign nature [is] portrayed in the character of Gizzy." Gizmo is buried in Linda's back garden surrounded by lights and flowers planted by her long-term partner, Bob, whose green thumb earned him a Britain in Bloom Award in 2017.

Bob and Linda spent many years raising money for Prisoners Abroad, a charity very close to Linda's heart. "He drove me around as I sold donated goods to raise much needed funds for the charity," Linda



recalled. She also gave many speeches to help raise awareness of Prisoners Abroad's vital work. She said the speeches "were unprepared, but I think I did a fair job!" Bob sadly passed away three days after he won his Britain in Bloom Award, but Linda has kept his memory alive through her ongoing voluntary work on behalf of Prisoners Abroad.

Linda now lives within the Stantonbury parish with her children close by. She has recently completed a new novel, Inheritance, that will be out by the end of October. Copies of her existing books may be purchased from the Age UK bookshops in Stony Stratford and Wolverton, or by emailing Linda direct at [lindayearsley@outlook.com](mailto:lindayearsley@outlook.com).

Of Mister Kitt, she had this final thing to say: "I have not said much about this unusual tale of talking cats who understand everything the humans say, as you'll simply need to read it for yourself!"

## YOGA & PILATES

Carly Circuitt

# FIRST PILATES CLASS FREE

CONTACT FOR DETAILS

Monday 5.45pm / 6.45pm  
Bancroft Meeting Place

Promote wellbeing,  
mental health & fitness

[www.carlycircuitt.com](http://www.carlycircuitt.com)

Phone/WhatsApp: 07834 231 199



## PARISH RANGER REPORT

### Abandoned trolleys

So far this year we have returned 24 trolleys to their supermarkets in the Parish. Please return your trolleys.

### Path clearing

The cutting back of bushes and trees to give our residents better access to the paths is an ongoing task for the Rangers. Here are just some of the pathways we've cleared in the Parish this year:

#### Blue Bridge



### Fly tipping

Fly tipping is still a big issue throughout the Parish, and we are aware there has been an increase during the transition period of the new waste collection. The Parish Rangers and local Enforcement Officer are continuing to report instances of fly tipping to Milton Keynes City Council. They and their new provider Suez are working hard to clear the rubbish.

If you need household waste or bulky items removing, then please contact Milton Keynes Council on **01908 252570** or email [recycling@milton-keynes.gov.uk](mailto:recycling@milton-keynes.gov.uk)

Alternatively, you can book a slot at your local rubbish tip:  
**By phone:** Milton Keynes City Council Customer Services - 01908 252811  
**Online:** MyCouncil - <https://mycouncil.milton-keynes.gov.uk/en>

#### New Bradwell Rubbish Tip

Newport Road  
 New Bradwell  
 MK13 0AH

#### Newport Pagnell Rubbish Tip

North Crawley Road  
 Newport Pagnell  
 MK16 9HG

**Please note winter opening times:  
 1st October to 31st March 8 am - 5 pm**

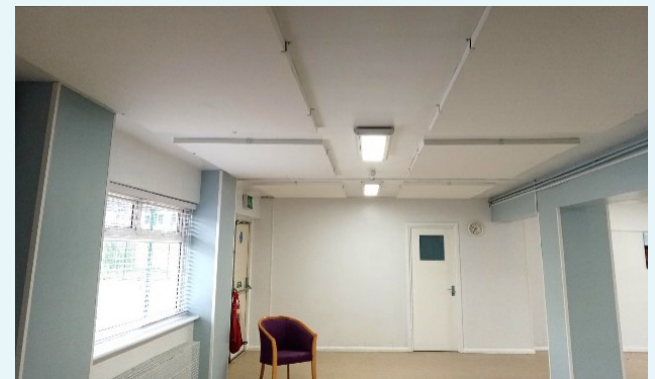
### Dog fouling

You may have seen lots of spray-painted marks on the grass verges. These denote spots where dog-fouling has taken place. Please clean up after your dog and place the bag in one of the dog waste bins provided. Alternatively, you can take it home and place it in your black bag.

You may have also noticed the gate to the MUGA at the Community Hub is kept permanently open with a padlock. This is because residents were closing the gate and letting their dogs off their leads to roam freely around the MUGA, resulting in dog-fouling. Dogs are prohibited from entering the MUGA for this reason, as the waste left behind poses a health and safety risk to our MUGA users.

### Sound proofing panels

The Rangers installed some sound proofing panels in the main hall at the Community Hub over the summer. These minimise the echo caused by music and chatting, thereby reducing noise pollution for our residents who live nearby.



### Parking on grass verges

We'd like to remind our residents that parking on grass verges is not permitted. It can cause damage to the verges that poses a safety risk to our residents, especially during the wetter months.

David Outram  
 Parish Ranger Supervisor



# Who are we?



**Just a reminder about who your Neighbourhood Police Officers are in the North Neighbourhood Team and how to contact us. There have been a few changes made to the team covering Bradville & Stantonbury over the years.**

**PC JORDAN BUCHANAN-KAY** has been a Neighbourhood Police Officer for over 5 years. He is assigned to this area and covers the parish.

There are also 3 Police Community Support Officers (PCSOs). They are:

#### **PCSO RICHARD BOLT**

Richard has been a PCSO for over 12 years. He has always been assigned to the parish, but he has also been a school officer at the Stantonbury Camps for some of this time.

#### **PCSO LESLEY ROGERS**

Lesley has been a PCSO for 6 years and has always been assigned to the parish.

#### **PCSO MEGAN WARD**

Megan has recently joined the North Neighbourhood Team. She is assigned to the parish and is a valuable member of the team already.

We patrol the parish on foot whenever possible, but the COVID-19 pandemic and low police resources have made this hard to do over the past couple of years. With the easing of COVID-19 restrictions and more police officers and PCSOs emerging from their TVP training, though, you should now expect to see us out and about more. Our job as PCSOs is to: work within the community, attempt to solve neighbourhood disputes by working with other agencies, and give talks in local schools and residential homes for the elderly & vulnerable. If you see us out and about, feel free to approach us for either a chat or to talk about anything that may be concerning you.

#### **HOW TO CONTACT US**

##### **Call 999 if:**

- A serious offence is in progress or has just been committed.
- Someone is in immediate danger or at risk of harm.
- Property is in danger of being damaged.
- A serious disruption to the public is likely

##### **Call 101 for non-emergency enquiries**

There is also a form that can be found on this site:

<https://www.thamesvalley.police.uk/ro/report/>

where you can also report crime and this will be sent through to the correct Neighbourhood department.

The **Thames Valley Police Textphone Service** is available for those with a hearing or speech impairment. **Dial 18001 101**

If you'd prefer to remain anonymous, you can report a crime without giving your name by calling CrimeStoppers on **0800 555 111**. CrimeStoppers is a charity that is independent from the police. They give people the power to speak up and stop crime – 100% anonymously. Always.

**Please come along to one of our Drop-Ins on the dates below when we will be happy to discuss any concerns or issues you may have.**

**Tuesday 21st November 2023 - 18:30pm to 20:00pm**

– Stantonbury Parish Office, 126 Kingsfold, Bradville, MK13 7DX

**Friday 1st December 2023 - 9.00am to 11.30am**

Great Linford Costa Coffee, Unit 3 St Leger Court, Great Linford, Milton Keynes MK14 5HA

**CrimeStoppers.**

**0800 555 111**

100% anonymous. Always.



**THE COMMUNITY HUB**  
MERCERS DRIVE, BRADVILLE, MK13 7AY

**READY FOR  
HIRE**

All Details on how to hire the Community Hub are available on our website:

<https://stantonbury-pc-org-uk/community-hub>





# Rainbows Children Centre Calendar



Monday	Tuesday	Wednesday	Thursday	Friday
<p><b>Tea, Toast and story time!</b> 9.15am - 10.15am</p> <p>Join us for tea and toast finished off with a story and songs!</p>	<p><b>Stay and Play</b> 10am - 11.30am</p> <p>8A stay and play session suitable for all ages. Come along to meet others and join in with a variety of fun activities, toys and messy play whilst making new friends! Healthy snack provided.</p>	<p><b>Tiny Rainbows</b> 9am - 10.15am</p> <p>Come along to explore a range of colours, textures, sights, and sounds with your little one. A warm and friendly group designed for non-walking babies.</p>	<p><b>Community learning</b> 10am - 11.30am</p> <p>Fun sessions provided by community learning. Call the centre and check Facebook for the latest sessions on offer.</p>	<p><b>Rise and Shine Breakfast</b> 9.15am - 9.45am</p> <p>Come and join us for some breakfast and a nice warm drink. Catering for both children and adults.</p>
<p><b>Community Larder &amp; Larder Registrations</b> 2pm - 4pm</p> <p>Join your local community larder today. Sign up today by accessing <a href="https://www.sofea.uk.com">https://www.sofea.uk.com</a>. Just £3.50 can get you up to 10 items from the freezer, fridge or cupboard plus as much fruit and veg as you can use from the stock available!</p>	<p><b>Community learning/ Parenting Courses</b> 1pm - 2.30pm</p> <p>Fun sessions provided by community learning and parenting courses run by the children's centres. Call the centre and check Facebook for the latest sessions on offer.</p>	<p><b>Coffee Hub</b> 10.30am - 11.30am</p> <p>An informal session for families to drop in for a hot drink and catch up as well as support with forms and funded nursery hours.</p> <p><b>Development checks</b> 12.30pm - 4pm</p> <p>Health visitor clinic at Rainbows Children Centre for your child's development checks. Pre-booked appointments with health visiting team only</p>	<p><b>Little Talkers Story Café</b> 1pm - 2pm</p> <p>Open up your child's imagination through the use of stories, songs and rhymes. Speak with our team to learn how best to support your children with speech and language skills whilst encouraging a positive interaction with books and stories. We will also be incorporating trips to the local Library in Wolverton- keep an eye out on our Facebook page for more details.</p>	<p><b>Soft Stay and Play</b> 9.45am - 11.15am</p> <p>Crawl, climb and slide into your Friday with our fun filled soft stay and play session. Throughout the session we will have full access to the outdoor garden where even more fun awaits.</p> <p><b>Family Food Share</b> 1pm - 3.45pm</p> <p>Come along to collect some groceries for you and your family which otherwise would see it go to waste. We have a wide range of delicious foods to take home and cook up a storm! Please bring a bag and small food bags to take away a sweet treat!</p>
<p><b>Maternity MK</b> 9:00am - 4:00pm</p> <p>Maternity MK will be in our Centre completing ante-natal and post-natal check-ups. These are by appointment only.</p>	<p><b>Maternity MK</b> 9:00am - 4:00pm</p> <p>Maternity MK will be in our Centre completing ante-natal and post-natal check-ups. These are by appointment only.</p>	<p><b>Maternity MK</b> 9:00am - 4:00pm</p> <p>Maternity MK will be in our Centre completing ante-natal and post-natal check-ups. These are by appointment only.</p>	<p><b>Maternity MK</b> 9:00am - 4:00pm</p> <p>Maternity MK will be in our Centre completing ante-natal and post-natal check-ups. These are by appointment only.</p>	<p><b>Maternity MK</b> 9:00am - 4:00pm</p> <p>Maternity MK will be in our Centre completing ante-natal and post-natal check-ups. These are by appointment only.</p>

Rainbows Children Centre, Kingsfold, Bradville, Milton Keynes, MK13 7BQ 01908 227 925



## Residents' E-newsletter

If you are interested in current news and events that are happening within the Parish, and want to know what new projects we are involved in, then please sign up on our website.

Or contact Tahnee Campbell on [tahnee.campbell@stantonburyparishcouncil.org.uk](mailto:tahnee.campbell@stantonburyparishcouncil.org.uk) or telephone 01908 227201.



## Don't Miss Out!

Follow us on Twitter, Instagram and Facebook!





# BOW STREET SOCIETY

**Ordinary people using ordinary skills  
to solve extraordinary crimes in Victorian London**



**An award winning crime fiction series by T.G. Campbell available to buy from Amazon in eBook and paperback.**

**DISCOVER MORE AT  
[www.bowstreetsociety.com](http://www.bowstreetsociety.com)**

## PLEASE HELP YOURSELF

Feel free to take some books. You may then return the book(s) once you're finished and swap them for others as many times as you want.

This is a free service provided by Stantonbury Parish Council.



**Stantonbury Parish Office,**  
126 Kingsfold  
Bradville  
Milton Keynes  
MK13 7DX

**01908 227201**  
[www.stantonbury-pc.org.uk](http://www.stantonbury-pc.org.uk)

[info@stantonburyparishcouncil.org.uk](mailto:info@stantonburyparishcouncil.org.uk)

## University Challenge

**Janet Warren**

I watch and enjoy University Challenge, cannot think why, because the answers to the questions just pass me by.

The students are so quick and so knowledgeable too, whilst I watch in wonder, but don't have a clue.



Young people with quick brains, they answer like lightning, it leaves me speechless, the pace is quite frightening.



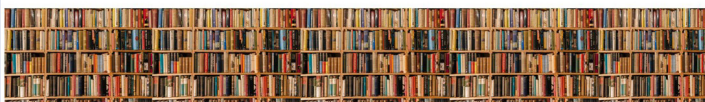
What's the capital of Peru? well I don't know, Lima answers the student, his face all glow.



Listen to this music, then name it and the composer, Stravinsky, Rite of Spring answered instantly by Oxford's Moser.

Well, I am still trying to think about the capital of Peru and there is a list in my head of the composers to go through.

But they have moved on leaving me far behind, so, I'll pass on the next question if you don't mind!







# Highlights from the Summer of 2023

## MKPA & The Great Gappo Circus Skills

Our youngest residents were treated to a summer of fun thanks to Milton Keynes Play Association who provided bouncy castles, Zorb balls, and other outdoor activities. The Great Gappo Circus Skills also proved popular.



## MK Dons Football Sessions

Our younger residents were treated to free football training sessions with the professionals from MK Dons over the summer.



## Martin White Football Factory Tennis & Basketball Sessions

The summer holiday calendar of sporty activities also featured free tennis and basketball sessions delivered by Martin White Football Factory. Like all our Summer 2023 activities, these were well-received by our younger residents.



## Memorial bench & tree planting

Milton Keynes Deputy Mayor Cllr Marie Bradburn cut the ribbon on the bench in memory of Queen Elizabeth II and carried out the ceremony of the planting of a cherry tree, also in memory of our late Queen.

## Coach Trip

Almost 300 parish residents travelled to Great Yarmouth on Thursday 10th August for the Summer coach trip. We were very lucky with the weather as it was glorious sunshine all day. Overall, a great day was had by all.





WINTER COACH TRIP

# LONDON

WEDNESDAY 6TH DECEMBER 2023

COACHES DEPART FROM:

THE PARISH OFFICE, 126 KINGSFOLD,  
BRADVILLE, MK13 7DX @ 7:45AM

COACHES TO LEAVE:

TRAFALGAR SQUARE @ 4:30pm

**TICKETS GO ON SALE:**FROM 10AM TUESDAY 7<sup>TH</sup> NOVEMBER  
AT THE PARISH OFFICE.

Please complete, print &amp; bring this Google form with you:

<https://forms.gle/2GTM6R9rUWb2spdr7>**TICKET PRICES****RESIDENTS:**Adult = £7.50  
Child (Under 18) = £5.00**NON-RESIDENTS:**Adult = £15.00  
Child (Under 18) = £10.00For more information contact  
Stantonbury Parish Council on 01908 227201  
or [info@stantonburyparishcouncil.org.uk](mailto:info@stantonburyparishcouncil.org.uk).

# FREE OVER 65s CHRISTMAS LUNCH

Wednesday 13th December 2023 12Noon-2.30pm  
The Community Hub  
Mercers Drive, Bradville MK13 7AY

◆ FREE CHRISTMAS LUNCH

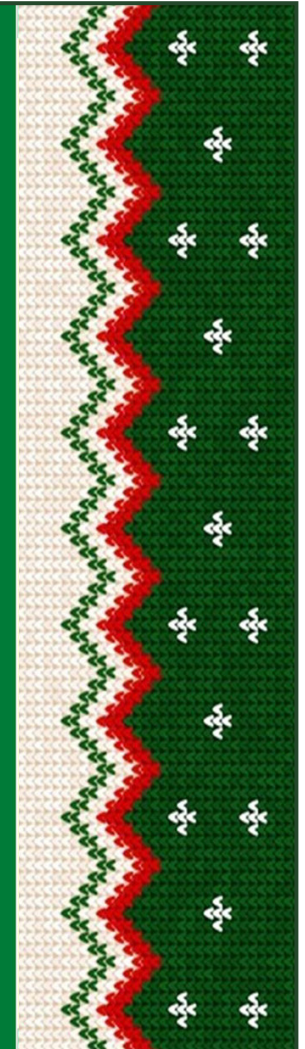
◆ CAROLS BY WOOD END INFANT &amp; PRE-SCHOOL CHOIR

◆ RAFFLE

*Transport can be provided on the day of the lunch (Subject to availability)*Free tickets will be available from 10am  
Tuesday 14th November

from the Stantonbury Parish Council office, 126 Kingsfold, Bradville MK13 7DX

Limited numbers. Tickets issued on a first come first served basis.

For more information contact Stantonbury Parish Council on 01908 227201 or by email at  
[info@stantonburyparishcouncil.org.uk](mailto:info@stantonburyparishcouncil.org.uk).



The popular Knit & Natter craft sessions returned in September after its summer break. Held every Tuesday at the Community Hub, they're open to everyone: residents & non-residents, the skilled crafters & beginners, and the young & young at heart. The sessions are free to attend, and free tea, coffee, and fruit squash is also provided.

Run by our Councillors in their free time, the latest sessions have proven even more popular than before. "It's great to meet the residents and have a chat," said Carol Northwood, Vice Chair of Stantonbury Parish Council & Councillor for Stantonbury & Linford Wood. "Knit & Natter gives everyone the chance to make new friends through their shared love of crafting," added Judy Kite, Councillor for Bancroft. The Knit & Natters have also turned their hands to new projects,



including the 'Knit A Nelly' pattern. Their efforts haven't gone unnoticed, either, as some Parish residents have even put forward requests on social media!

In addition to being a great place to make new friends, Knit & Natter is also a warm, safe space for stay-at-home parents to bring their little ones without spending money.

Parents and carers can also play and craft with their little ones during the free sessions held alongside Knit & Natter. Crafting materials, toys, books, and games are available for everyone to use. The main hall also provides the perfect shelter from the bad weather of the Autumn and Winter months.

Knit & Natter will be taking a break over Christmas between **12th December - 2nd January but will return Tuesday 9th January 2024 at 10AM** at the Community Hub. There's no need to book to come along. If you have any questions, please contact Stantonbury Parish Council by phone on 01908 227201 or by email at [info@stantonburyparishcouncil.org.uk](mailto:info@stantonburyparishcouncil.org.uk).



**EVERY TUESDAY**

**FROM 5TH SEPTEMBER 2023**

*Christmas Break: 12th Dec - 2nd Jan (Returning 9th Jan)*

**10AM—1PM**

**The Community Hub**

**Mercers Drive, Bradville, MK13 7AY**

**This is a FREE event  
and everyone is welcome.**

**FREE tea & coffee will also be provided.**



## Do you have clothes you no longer want?

### Donate them to the Stantonbury Parish clothes bank

At The Community Hub,  
Mercers Drive, Bradville, MK13 7AY

All money raised from clothes donations will be  
used to fund activities for our residents

For more information please contact  
Stantonbury Parish Council on  
**01908 227201** or by email at  
[info@stantonburyparishcouncil.org.uk](mailto:info@stantonburyparishcouncil.org.uk).






# FREE NON-CONTACT BOXING SESSIONS FOR YOUNG PEOPLE AGED 11 – 16

STARTING  
WEDNESDAY  
4TH OCTOBER

Available for those who live in  
or attend secondary school in  
**Stantonbury Parish**

 EVERY WEDNESDAY  
5.00PM – 6.00PM

 THE COMMUNITY HUB  
24 MERCERS DRIVE  
BRADVILLE  
MILTON KEYNES  
MK13 7AY

**FOR MORE INFO CONTACT:**

 [hello@boxingclever.org.uk](mailto:hello@boxingclever.org.uk)

 07746 250465

**BOXING**<sup>®</sup>  
CLEVER

## WHAT CAN I PUT IN MY BINS?



✓	
Animal waste*, incl. dog poo, cat litter, hamster/gerbil bedding, etc.	Laminated paper
Biscuit wrappers	Mixed materials, e.g. pill packets, padded envelopes, Pringles tubes
Broken glass or china - please wrap to avoid injury	Pet food pouches
Bubble wrap	Plastic film, e.g. clingfilm
Clothes – poor quality	Polystyrene
Crisp packets	PPE disposable facemasks
Disposable coffee cups	Sanitary products
Disposable nappies - ensure they are double bagged	Sweet wrappers
Fruit nets	Tissues and kitchen towel
Greasy pizza box	Wet wipes and sanitising wipes

- ✓ **CLOSE** the lid
- ✓ **CONTACT** MK City Council to be assessed for a larger black wheelie bin if you think you need one
- ✗ **DO NOT** leave bags beside the bins

✓	✗
Bread, baked goods	Branches over 15 cm in diameter
Coffee grounds	Japanese knotweed
Dairy products	Plant pots
Fruit and vegetables including peelings & windfall fruit	Soil
Mouldy or out of date food / plate scrapings	All animal waste, incl. dog poo, cat litter, hamster/gerbil bedding, etc.
Compostable cups & caddy liners with standard EN13432 / 'Seedling logo'	Items labelled 'compostable' that do not display the standard EN13432 or display the 'Seedling logo'
Raw or cooked meat, fish or bones	items labelled 'biodegradable'
Tea bags	nappies - disposable or biodegradable
Dead flowers	<p><b>CONTACT</b>  <b>MILTON KEYNES</b>  <b>CITY COUNCIL ON:</b></p> <p><b>01908 252570</b></p> <p><a href="mailto:recycling@milton-keynes.gov.uk">recycling@milton-keynes.gov.uk</a></p> <p><b>MyServices</b></p>
Grass	
Leaves & plants	
Small branches up to 15 cm in diameter / twigs	
Weeds	
Pet food	



# WHAT CAN I PUT IN MY BINS?



✓	✗
Drinks & milk bottles (Wash, squash & lid on)	Bubble wrap
Cleaning product bottles, incl. pumps & triggers	Wet wipes
Plastic pots, tubs & trays, incl. black plastic & ready meal containers	Crisp, biscuit, sweet packets or wrappers
Bottle & jar Lids (metal/plastic)	Fruit nets
Tetrapak, e.g., juice or milk cartons	Hard plastics e.g. toys
Empty aerosol spray cans	Pet food pouches
Food & drink cans	Soft plastics e.g. plastic bags, cling film
Pet food tins	Polystyrene
Sweet and biscuit tins	Items with food/drink still inside
Clean tin foil or foil food trays	Metal pans or tools
Glass bottles	Coffee capsules/pods
Wine bottles	Drinking glasses or Pyrex
Glass jars	Any other glass item e.g. perfume bottles, light bulbs or mirror

✓	✗
Cards	Laminated paper
Cardboard	Nappies (disposable or biodegradable)
Catalogues	Disposable or compostable coffee cups
Clean pizza boxes	Padded envelopes
Envelopes, incl. window envelopes	PPE disposable face masks
Leaflets	Tissues
Newspapers	Kitchen roll
Shredded paper (shred as little as possible)	Cotton wool
	Clothes, fabric
	Broken glass
	Broken china



**This information is available in a black & white format from the parish office, 126, Kingsfold, Bradville, MK13 7DX**

# Squirrels Children's Centre

Redbridge, Stantonbury, MK14 6BB. 01908 317863

**We welcome families from Blakelands, Bolbeck Park, Giffard Park, Great Linford, Stantonbury, Redhouse Park, Willen and Willen Park**



Monday	Tuesday	Wednesday	Thursday	Friday
<p><b>10.00am - 11.15am Stay and Play</b></p> <p>Lots of exciting play opportunities for you and your child to learn, explore and make new friends.</p>	<p><b>9.30am - 12.30pm Development Checks</b></p> <p>Appointment only</p>	<p><b>9.30am - 11.00am Story Sacks Must be booked</b></p> <p>Creche Available Come and design and make a story sack full of props around your chosen story. These are a lovely way to engage in stories and reading with your child. Provided by CLMK <b>Starting 20/09/23</b></p>	<p><b>9.00am - 12.00pm Midwife Session</b></p> <p>Appointment only</p>	<p><b>9.00am - 12.30pm Development Checks</b></p> <p>Appointment only</p> <p><b>9.00-10.30 Talk, Play and Support</b></p> <p>A relaxed session to unwind before the weekend, find out about any support you may need including benefits, budgeting, School readiness, Food Bank, Hygiene Bank, Baby Basics, Period Poverty and St Marks Meals</p>
<p><b>1.30pm - 3.00pm Story and Rhyme Time</b></p> <p>Come and share our love for books and singing</p>	<p><b>10.00am - 11.30am Outreach Giffard Park School</b></p> <p>Meet us in the school library for a fun session of stories, singing and music.</p>	<p><b>12.30pm - 2.30pm Well-Being Wednesdays Must be booked</b></p> <p>Creche available (fortnightly) Join us for a variety of arts and crafts and enjoy some "Me-Time" Provided by CLMK</p>	<p><b>9.30am - 11.00am Forest Tots</b></p> <p>Enjoy the wonders of nature, lots of learning opportunities in the beautiful private forest school. Dress ready to get muddy. Run by Wood End School. £2 per child, £1 per additional child</p>	<p><b>Baby Massage 11.30am - 12.00pm</b></p> <p>To strengthen bonding and promote relaxation, call the centre or call Helen directly on 07803042337</p>
	<p><b>1.30pm - 3.00pm Let's get busy... Let's Explore</b></p> <p>Come and develop your child's role play and imaginative skills. A different theme each week</p>		<p><b>1.30pm - 3.00pm Bumps and Babies</b></p> <p>Come and join our relaxed, nurturing sensory baby session. A chance to meet other new parents in the area and share experiences</p>	<p><b>12.00pm - 2.00pm Cooking On a Budget Must be booked</b></p> <p>Try new recipes and ideas. Explore ways to make the food shop go further.</p>

**We kindly ask for a £1 voluntary contribution for each session**

## Would you like to advertise in our Parish Newsletter?

**Full page £130 + VAT**  
w 198mm x h 280mm

**Half page £65 + VAT**  
w 198mm x h 138mm

**Quarter page £33 + VAT**  
w 96mm x h 138 mm

Please email: [info@stantonburyparishcouncil.org.uk](mailto:info@stantonburyparishcouncil.org.uk) or Tel: 01908 227201

**We encourage local groups and businesses within the parish to advertise in this newsletter free of charge**



Part  
Funded by

Milton Keynes  
City Council



# ABRA Coach Trip to The Lord Mayor's Show - London

**Saturday  
11th November 2023**

Our All Bradville Residents Association coach  
departs from SPC Office, 126 Kingsfold  
at 8:00 and leaves London at 17:00

**Tickets cost £7.50**

**Apply online at  
<https://2020viz.com/abra>**

For more information  
email: [abra.information@gmail.com](mailto:abra.information@gmail.com)  
or call / WhatsApp: 07756 847 596







**Roman Park Residents Club &  
Stantonbury Parish Council**

**PRESENTS A**

# **Grand Fireworks Event**

**OPEN TO ALL**

**November 4th begins  
at 6.30pm**

**Come along and enjoy the display  
Food available and activities for children**



STANTONBURY  
PARISH  
COUNCIL





# Christmas Colouring Competition



paint the world  
**SUPER**  
COLORING

**Stantonbury Parish Council would like to invite all young people of the Parish to enter a Christmas colouring competition. Winners of each category will receive a £10 Amazon gift voucher.**

**Age ranges are: Under 5's, 5-8 and 9-11.**

**Entries should include your name, age and contact number.**

Please submit your entry by Friday 12th January 2024. Winners will be notified by Friday 19th January 2024.

Please drop-off your entries at the Stantonbury Parish Council office, 126 Kingsfold, Bradville, MK13 7DX.



## Community Contacts

<p><b>Age UK Milton Keynes</b> Tel: 01908 550700</p>	<p><b>Anglian Water</b> Supply Problems – 03457 145145 Leaks 0800 771881 (office hours)</p>
<p><b>MK Central Citizen’s Advice Bureau</b> 0808 278 7991 (freephone)</p> <p>Advice on a range of issues. Tel.01908 604 475 <a href="http://www.miltonkeynescab.org.uk/">www.miltonkeynescab.org.uk/</a></p>	<p><b>Milton Keynes City Council</b> General Enquiries 01908 691691</p> <p><b>Waste Recycling Team</b> 01908 252570</p> <p><b>MKCC Housing Solutions Service</b> Office hours: 01908 253481 Out of Hours Emergency contact information: 01908 25411 <a href="mailto:homeless.enquiries@milton-keynes.gov.uk">homeless.enquiries@milton-keynes.gov.uk</a></p>
<p><b>Mears Contractors</b> Tel: 0330 123 2522</p>	<p><b>Housing Income Team</b> Tel: 01908 252937 opt 1 <a href="mailto:rents@milton-keynes.gov.uk">rents@milton-keynes.gov.uk</a></p>
<p><b>The Parks Trust</b> 01908 233600</p>	
<p><b>MK Food Bank</b> Helpline: 0300 303 4933 Text HELP to 07874 964 505    Helpline is open from 9:00am to 3:00pm    Monday – Friday</p> <p><b>Short-term crisis food support.</b> Tel. 01908 322 800 <a href="http://www.mkfoodbank.org.uk/">www.mkfoodbank.org.uk/</a></p> <p><b>MK Food Bank Donations</b> We have a green box in SPC reception where you can drop off donations between 9:00 am and 4:00 pm Monday to Friday</p>	

## Useful Information

<p><b>Animal Health &amp; Welfare, Dogs and Pest Control</b> Tel: 01908 252398</p>	<p><b>Cost of Living Information</b> <a href="https://www.gov.uk/cost-of-living">https://www.gov.uk/cost-of-living</a></p>
<p><b>Money Helper</b> Free advice resource provided by the UK Government’s Money &amp; Pensions Service. <a href="http://www.moneyhelper.org.uk/en">www.moneyhelper.org.uk/en</a></p>	<p><b>Money Saving Expert</b> Popular consumer website with tips for reducing household bills. <a href="http://www.moneysavingexpert.com/">www.moneysavingexpert.com/</a></p>



**Do you live in Bradville,  
Bancroft, Bancroft Park, Blue Bridge,  
Linford Wood, Oakridge Park or  
Stantonbury?**

Follow us to hear about local events and to have your say

